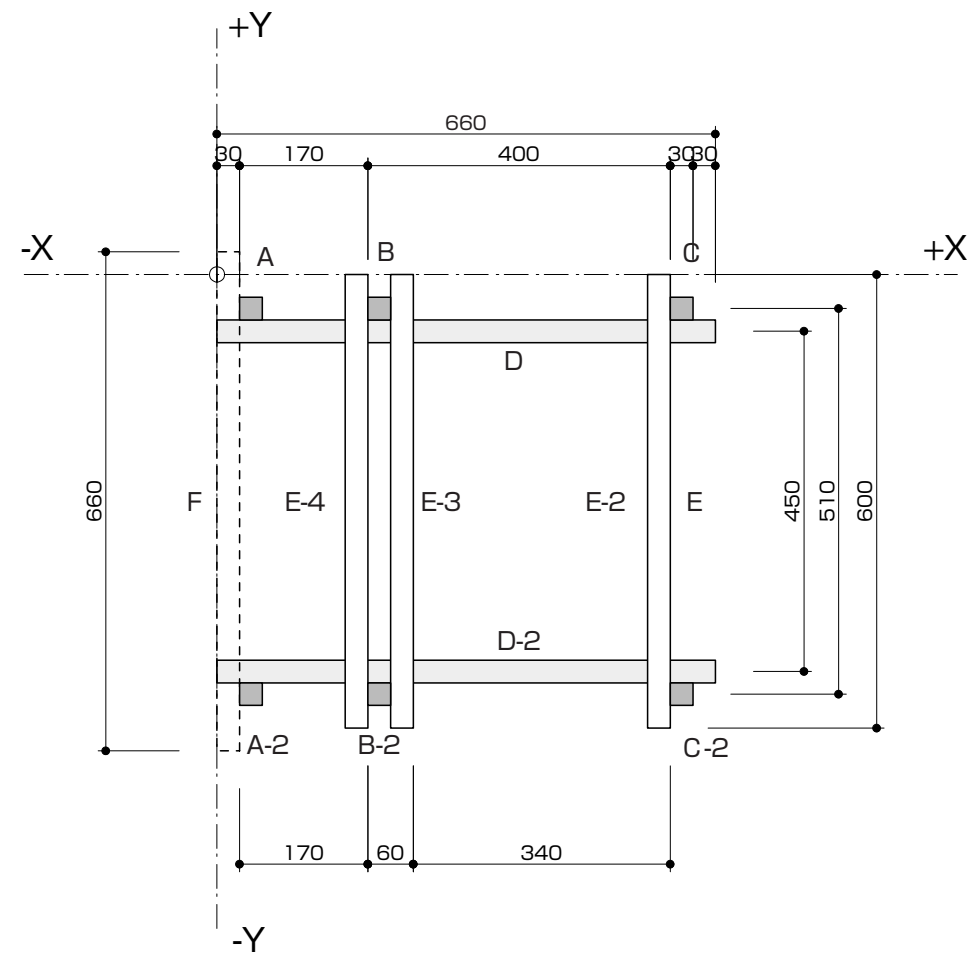


上から見る

The diagram shows the top view of a mechanical part with the following dimensions and features:

- Overall Dimensions:** Total width is 827.5 and total height is 660.
- Internal Dimensions:** A central rectangular area has a width of 450 and a height of 360.
- Offsets:** The central area is offset by 45 from the left and right edges, and by 30 from the top and bottom edges.
- Coordinate System:** The origin (0,0) is at the top-left corner. The X-axis points to the right (+X) and the Y-axis points downwards (+Y).
- Labels:** The part is labeled 'G' at the top and 'G-2' at the bottom. The central area is labeled 'I' on the left and 'H' on the right.
- Color Coding:** The central area is outlined in red on the left and blue on the right.



部材表						
A	30	×	30	×	470	2 本
B	30	×	30	×	440	2 本
C	30	×	30	×	330	2 本
D	30	×	30	×	660	2 本
E	30	×	30	×	600	4 本
F	30	×	30	×	660	1 本
G	90	×	30	×	450	2 本
H	360	×	470	×	15	1 枚
I	330	×	889	×	15	1 枚

前から見る

Technical drawing showing the front view of a mechanical assembly. The drawing includes dimensions and coordinate axes. The vertical axis is labeled +Z at the top and -Z at the bottom. The horizontal axis is labeled -X on the left and +X on the right. Key dimensions include: 870.4 (total height), 30 (top offset), 450 (width), 170 (width), 220 (width), 30 (width), 30 (width), 197.5 (width), 470 (height), 340 (height), 440 (height), 70 (height), 100 (height), 170 (height), 100 (height), 330 (height), 70 (height). The drawing also shows a red line labeled 888.8 and a blue line labeled 469.6. The assembly is composed of several rectangular blocks and a central vertical shaft.

